



Equipment at CastExpo 2008

Welcome to our booth. The following is a description of the equipment displayed at CastExpo. If you require additional information, please contact us at 614-471-5926 or www.rimrockcorp.com



Display of Spray Guns and Nozzles

Rimrock offers a variety of spray nozzles and spray guns designed to fit your specific application. To view more detailed information, simply log into our spray catalog.



Rebuild Area

Does your equipment need a make-over?

We can help you get the most out of your equipment by rebuilding and upgrading existing machines. This unit displayed was transformed to "like new" condition and now has the latest spray and controls technology. [Click here to view before & after photos.](#)



Twistmaster

The Twistmaster, designed by Rimrock's strategic partner, Fill, provides a unique method for decorating tasks. With acceleration values over 170 m/sec^2 at a 400 kg load the Twistmaster guarantees minimal cycle times and total cost-efficiency. The range of parts which can be handled include cast parts such as cylinder heads, engine blocks, chassis parts, wheels, induction pipes, heat pumps and transformer housings. The Fill twistmaster 400 can be supplied as a stand-alone machine with hammers or linked into a line of machines with a separate hammer station.



042 Robot

Our 042 manifold displayed on the ABB 6650 Shelf Robot was designed for applications that require superior blow off and flexibility. Customers using this spray system have decreased scrap rates by 25% and cycle times by 30%. One customer quotes *“The 042 linear manifold has proven to be compatible with any type of die release lubricant at any ratio tested without clogging, sticking, or dripping. It is the most versatile and adaptable spray head which I have used and has become our standard by which base line development is measured.”*



510 Reciprocator

The 510 Two Axis Reciprocator provides effective top, bottom, and side core spray by using its six independent spray zones in combination with two blow off zones. The flexible manifold construction accurately positions the 032 nozzles to achieve maximum results with minimal cycle time.



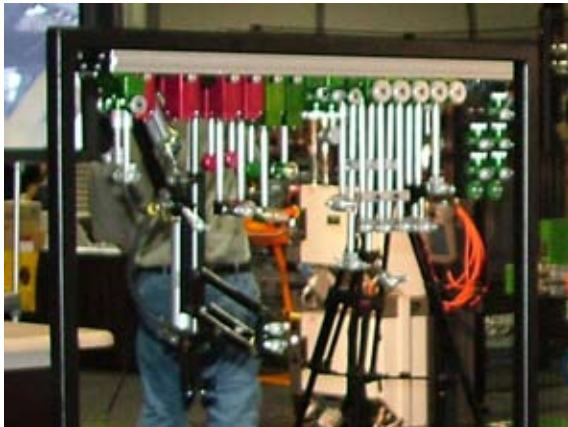
Baraldi Smart Lubrication System

The Italian company, Baraldi Lubrificanti, displayed its Smart Lubrication System (SLS) with hopes of becoming a future partner for Rimrock. The SLS monitors the surface temperature of the die on every cycle and provides recorded data. This technology assists die casters with reducing scrap, energy costs, and defects while increasing die life.



Force Control/Finishing

Finishing of this large casting is made easy with the use of an ABB robot, rigid spindle, belt sander and new Force Control software. Through the use of a six axis force transducer, the robot is able to maintain a constant force throughout the entire path. In addition, the operator can now manually move the robot arm to teach the deburring path, reducing the time consuming joystick teaching.



Nozzle Stand

We offer a variety of mounting options, spray tips, and configurations for each of our nozzle offerings. To view more detailed information, simply log into our spray catalog.



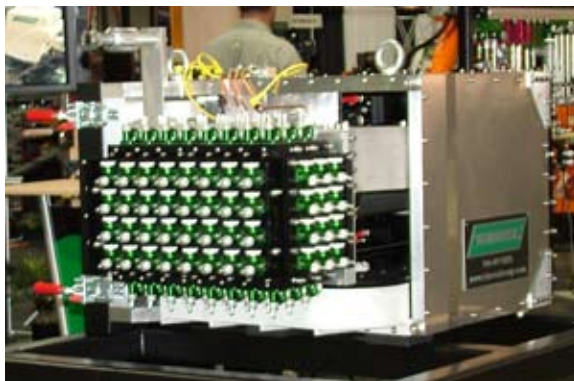
Custom 032 Manifold

Rimrock's custom manifolds with 032 nozzles have proven to reduce cycle time, lube consumption, and maintenance while improving casting quality. Mercruiser is one of the many customers that have benefited from using the 032 technology attesting that *"after running the Rimrock 032 manifold for over a year, we have realized improved casting appearance and less scrap. The 032 nozzle is easier to adjust and requires less maintenance since we no longer have to rebuild the nozzles to maintain uptime. The 032 nozzle is a great improvement."*



405 and 410 with Allen Bradley Controls

The 405 ladle and 410 reciprocator are being controlled by Rimrock's new Allen Bradley controller. This controller can be purchased with new equipment or retrofitted to an existing mechanical unit. Features of the Allen Bradley controller include a CompactLogix L43 processor, programming with RSLogix 500 software, Ethernet I/P network connectivity and network communications accessible to AllenBradley SLC, PLC5, and MicroLogix controllers.



Spray Cassette for Engine Blocks

This spray cassette was designed and manufactured to cool and lubricate the die efficiently and effectively. The atomization provided with the 032 nozzles has successfully proven to reduce lube consumption and scrap. Typical castings that are suited for this style of spray include engine blocks, transfer cases, and transmission cases.

We appreciate your interest in Rimrock and look forward to helping you save time and money with our automated solutions. Please visit our website for more detailed information on our products and services.